

**3/2 Directional control valves
Solenoid pilot actuated
Piston seat valves
Flange connection PN 25/40 DIN 2501**

**Control of single acting cylinders
Control of air cushion on high power presses
Standard manual override**



Technical data

Fluid:
Compressed air, filtered and lubricated air*1)

Operating pressure:
0,5 to 16 bar

Nominal sizes:
80 and 125

Operating action:
Poppet valve

Fluid connection:
Flange DIN 2501/PN 25/40

Temperature range:
-15 to +50°C
Please contact our technical service for use below +2°C.

Flow direction:
Fixed

Materials

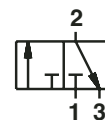
Housing: Modular graphite cast iron (GGG 50)
Seat seal: Polyurethane (AU)

Ordering example

See page 2

Pilot valves:

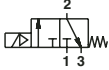
See data sheet N/UK 5.4.185



*1) Shell Hydrol DO 32, Esso Febis K32 (as of July 1992) or comparable oil

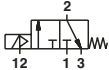
General informations

Solenoid pilot actuated (internal pilot source)

Symbol	Type *1)	Nominal size	Operating pressure (bar)		Control pressure (bar)		kv-value (m ³ /h)	Switching time (ms)
			min.	max.	min.	max.		
	8000381-	80	2	16	–	–	90	250
	8000581-	125	2	16	–	–	200	340

*1) Please insert voltage codes

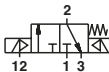
Solenoid pilot actuated (external pilot source)

Symbol	Type *1)	Nominal size	Operating pressure (bar)		Control pressure (bar)		kv-value (m ³ /h)	Switching time (ms)
			min.	max.	min. *2)	max.		
	8000382-	80	0.5	16	2	16	90	250
	8000582-	125	0.5	16	2	16	200	340

*1) Please insert voltage code

*2) Control pressure 2 bar max. over working pressure

Double solenoid pilot valve (external pilot source)

Symbol	Type *1)	Nominal size	Operating pressure (bar)		Control pressure (bar)		kv-value (m ³ /h)	Switching time (ms)
			min.	max.	min. *2)	max.		
	8002382-	80	0.5	16	2	16	90	250
	8002582-	125	0.5	16	2	16	200	340

*1) Please insert voltage code

*2) Control pressure 2 bar max. over working pressure

Valve completely	Pilot valve	Spare kit
8000381-*1)	SXE9575-Z70-80/K *1)	0610868
8000382-*1)	SXE9575-Z70-80/K *1)	0610868
8002382-*1)	SXE0575-Z50-80/K *1)	0610868
8000581-*1)	SXE9575-Z70-80/K *1)	0610860
8000582-*1)	SXE9575-Z70-80/K *1)	0610860
8002582-*1)	SXE0575-Z50-80/K *1)	0610860

*1) Please insert voltage code see spare coils

Ordering example

Poppet valve, internal pilot supply,
nominal size 80 mm, voltage 24 V DC,
quote: 8000381-33N

Voltage codes and spare coils

Voltage	30 mm coil to DIN 43 650 Form A		Spare parts
	Code	Inrush/hold	
24 V DC	33 N	4 W	V10633-A33N
110/120 V, 50/60 HZ	88 N	10/8 VA	V10633-A88N
220/120 V, 50/60 HZ	89 N	10/8 VA	V10633-A89N

Other voltages on request

Warning

These products are intended for use in industrial compressed air systems only. Do not use these products where pressures and temperatures can exceed those listed under 'Technical Data'.

Before using these products with fluids other than those specified, for non-industrial applications, life-support systems, or other applications not within published specifications, consult NORGREN.

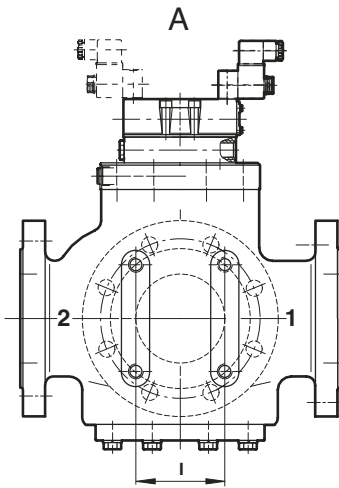
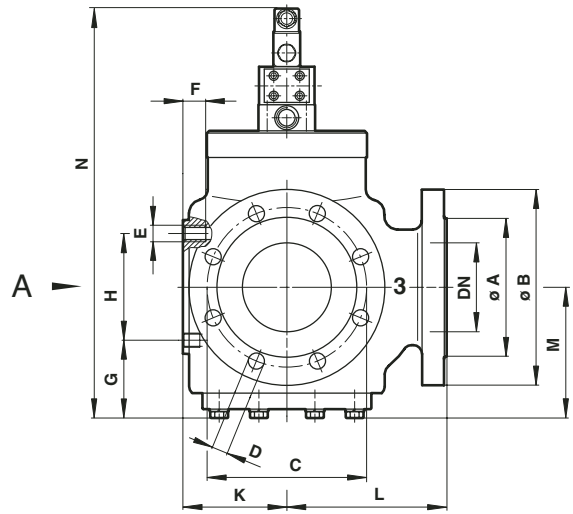
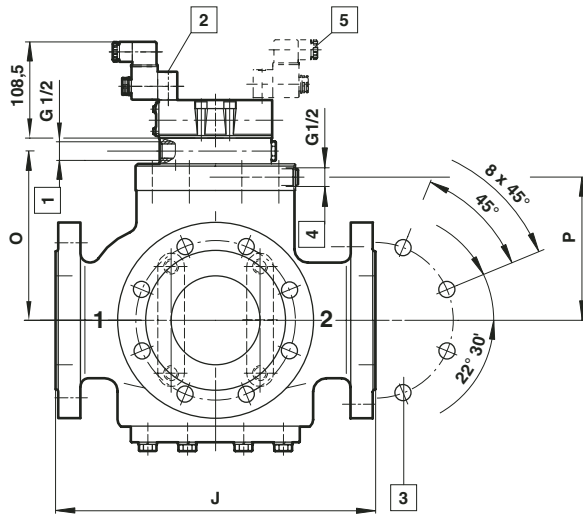
Through misuse, age, or malfunction, components used in fluid power systems can fail in various modes.

The system designer is warned to consider the failure modes of all component parts used in fluid power systems and to provide adequate safeguards to prevent personal injury or damage to equipment in the event of such failure.

System designers must provide a warning to end users in the system instructional manual if protection against a failure mode cannot be adequately provided.

System designers and end users are cautioned to review specific warnings found in instruction sheets packed and shipped with these products.

Basic dimensions



- 1** Pilot pressure
- 2** Manual override
- 3** Hole pattern for 8 bores
- 4** External pilot supply
- 5** Position for solenoid/solenoid actuated valves

DN	Ø A	Ø B	C	D	E	F	G	H	I	J	K	L	M	N (approx)	O	P	R
80	139	200	160	18	M16	33	89	100	100	360	122	180	155	498	188,5	159	G1/2
125	188	270	220	26	M16	33	141	180	130	400	152	200	231	655	269,5	241	G1/2