

Bacosol 32 mm 2/2 & 3/2-way valves

For lubricated and unlubricated compressed air, neutral liquids or gases
 Poppet valve, directly actuated with spring return
 High cycle rate of up to 1200 cycles per minute
 Sub-base mounted
 Response time: 15 ms
 Operating pressure: see technical data

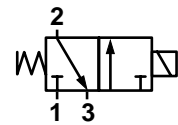


Description

Solenoid valve for air, and neutral liquids or gases
 Switching function: normally closed
 Flow direction: determined
 Fluid temperature: -10 °C up to max. +80 °C
 Ambient temperature: -10 °C up to max. +50 °C
 Mounting position: as required

Materials

Body: Brass
 Seat seal: NBR
 Internal parts: Stainless steel



Symbol 1: 3/2 NC

Technical data

NC: Normally closed

Connection size G	DN mm	kv-Value		Part number	Operating pressure bar	Function	Manual override	Hit & Hold *	Voltage	Power consumption	Symbol / Drawing
		l/min	m³/h								
3/2 Direct acting valves G 1/8											
1/8	0.8	0.4	0.024	04-311-101-20+EDC+ACC	0 - 23	NC	No	No	24V DC	10W	1 / 1
1/8	1.2	0.8	0.048	04-311-102-20+EDC+ACC	0 - 17	NC	No	No	24V DC	10W	1 / 1
1/8	1.6	1.4	0.084	04-311-103-20+EDC+ACC	0 - 14	NC	No	No	24V DC	10W	1 / 1
1/8	2.0	2.2	0.132	04-311-104-20+EDC+ACC	0 - 10	NC	No	No	24V DC	10W	1 / 1
1/8	2.4	2.8	0.168	04-311-105-20+EDC+ACC	0 - 8	NC	No	No	24V DC	10W	1 / 1
1/8	3.0	4.0	0.240	04-311-106-20+EDC+ACC	0 - 5.5	NC	No	No	24V DC	10W	1 / 1
3/2 Direct acting valves G 1/4											
1/4	0.8	0.4	0.024	04-311-201-20+EDC+ACC	0 - 23	NC	No	No	24V DC	10W	1 / 1
1/4	1.2	0.8	0.048	04-311-202-20+EDC+ACC	0 - 17	NC	No	No	24V DC	10W	1 / 1
1/4	1.6	1.4	0.084	04-311-203-20+EDC+ACC	0 - 14	NC	No	No	24V DC	10W	1 / 1
1/4	2.0	2.2	0.132	04-311-204-20+EDC+ACC	0 - 10	NC	No	No	24V DC	10W	1 / 1
1/4	2.4	2.8	0.168	04-311-205-20+EDC+ACC	0 - 8	NC	No	No	24V DC	10W	1 / 1
1/4	3.0	4.0	0.240	04-311-206-20+EDC+ACC	0 - 5.5	NC	No	No	24V DC	10W	1 / 1

* PWM energy saving option

Electrical characteristics

Voltage range -10 up to +15%
 100% duty cycle
 Protection class according to EN 60529: IP65 with connector
 Insulation class H (180 °C)
 Electrical connection according to DIN 43650A
 Coil orientation: rotatable 360°
 Coil mounting: with G 1/4 nut

Drawing legend

Index	Description
1	P
2	A
3	R

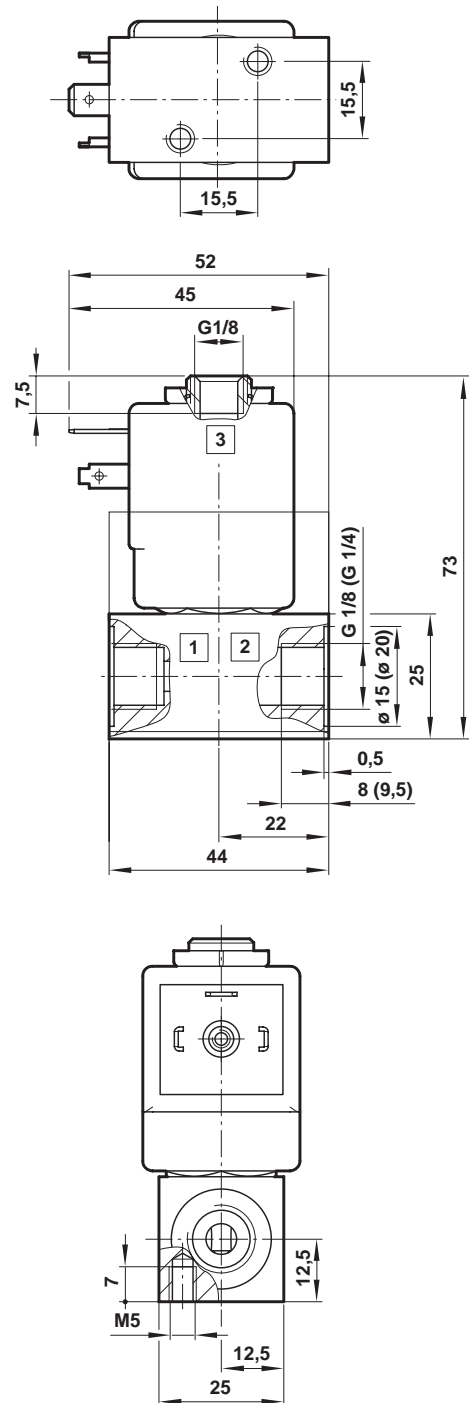
P = Inlet port, A = Outlet port, R = Exhaust port

Further options on request

- Function (NO, Universal)
- Pressure range
- Vacuum
- Materials
- Manual override
- Voltage
- Electrical connection
- Power consumption

Please find the safety instructions for the FAS range on page 318.

Drawing 1 *



* Dimensions in mm