

FLATPROP EQP

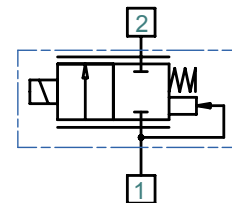
High flow, high precision 2/2 proportional valve
Increased flow - 186 L/min of Oxygen at 2 Bar
Same footprint as Flatprop EQI and Direct
Low power nominal consumption of 2.5 W
Frictionless design enables high resolution

Technical data

Function	2/2 NC proportional
Connection	Cartridge
Media, type	Oxygen, neutral gases
Operating Gauge pressure	0...7 bar (0...101 psi)
kv	4.4
Back pressure, bar	10% of the inlet pressure
Temperature range, ambient °C	5°C to 50°C
Temperature range, media °C	5°C to 50°C
Temperature range, storage °C	-40°C to 75°C
Life expectancy, cycles	100 Mio. (with triangular signal)
Internal leakage	<10-2 mbarl/s (~0.6ml/min) @ pmax
External leakage	<10-2 mbarl/s (~0.6ml/min) @ pmax
Power consumption, nominal, watt	2.5W nominal @ T=20°C



Symbols



Symbol: 2/2 NC
pressure compensated

Material

Body material in contact with media	Stainless steel only or Stainless steel/Brass
Seals	FPM or NBR

Standard models

Material	Seal Material	Current	Ohm	Voltage	Part number	Drawing
Stainless steel/Brass	FPM	104mA	230Ω	24V	12-216C-04621+EQPFIL+BDU	1/1
Stainless steel/Brass	FPM	211mA	57Ω	12V	12-216C-04621+EQPFIL+BED	1/1
Stainless steel/Brass	FPM	417mA	14.4Ω	6V	12-216C-04621+EQPFIL+BEK	1/1
Stainless steel/Brass	NBR	104mA	230Ω	24V	12-216C-04620+EQPFIL+BDU	1/1
Stainless steel/Brass	NBR	211mA	57Ω	12V	12-216C-04620+EQPFIL+BED	1/1
Stainless steel/Brass	NBR	417mA	14.4Ω	6V	12-216C-04620+EQPFIL+BEK	1/1
Stainless steel	FPM	104mA	230Ω	24V	12-216C-04641+EQPFIL+BDU	1/1
Stainless steel	FPM	211mA	57Ω	12V	12-216C-04641+EQPFIL+BED	1/1
Stainless steel	FPM	417mA	14.4Ω	6V	12-216C-04641+EQPFIL+BEK	1/1
Stainless steel	NBR	104mA	230Ω	24V	12-216C-04640+EQPFIL+BDU	1/1
Stainless steel	NBR	211mA	57Ω	12V	12-216C-04640+EQPFIL+BED	1/1
Stainless steel	NBR	417mA	14.4Ω	6V	12-216C-04640+EQPFIL+BEK	1/1

Please read the installation manual K12M.0001

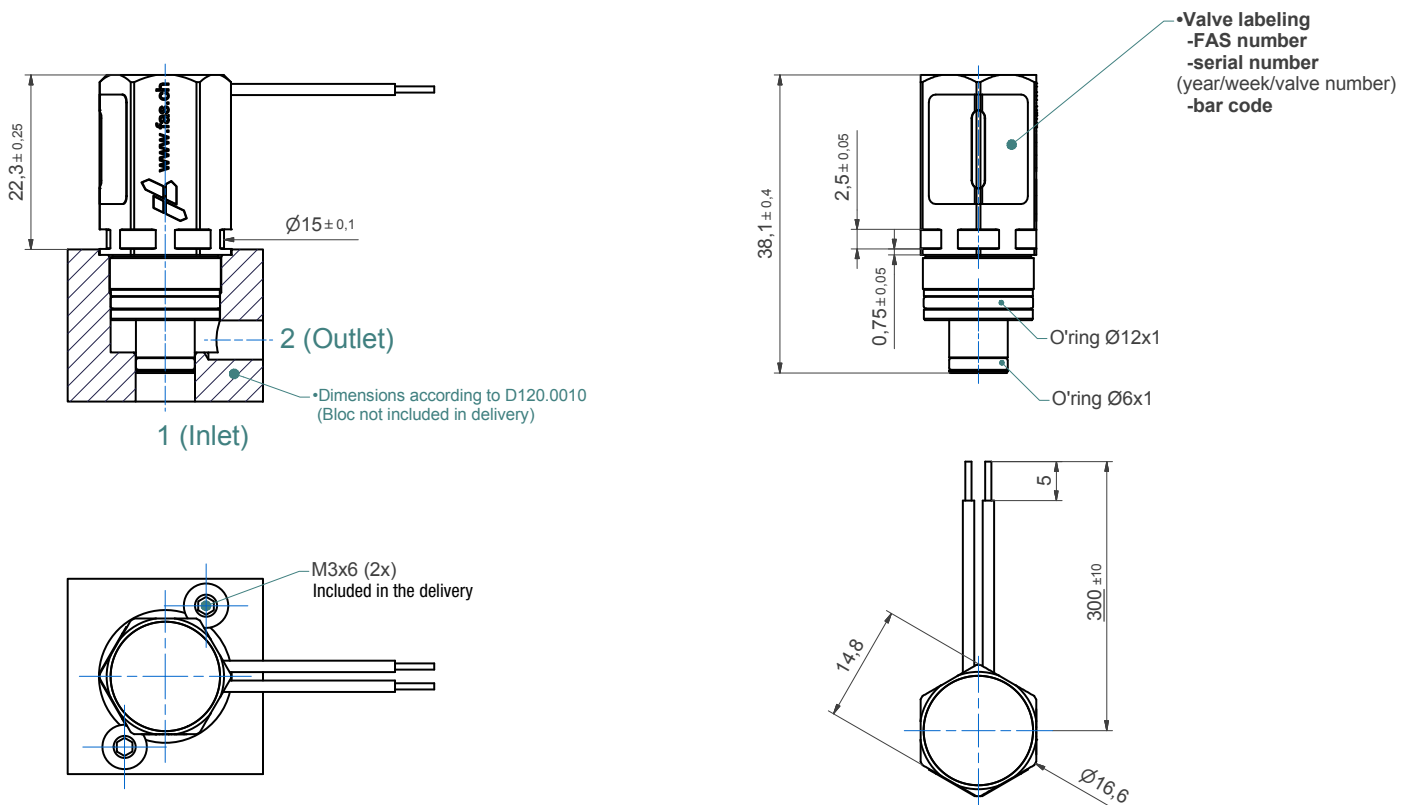
Electrical characteristics

Electrical connection	300mm AWG24 flying leads
Insulation class, °C	F155
Electrical insulation, volt	1000V AC
Protection degree, IP	51

Further options on request

- Specific coils
- Higher temperature range
- Flange mount adaptor
- EPDM seals
- OEM specification

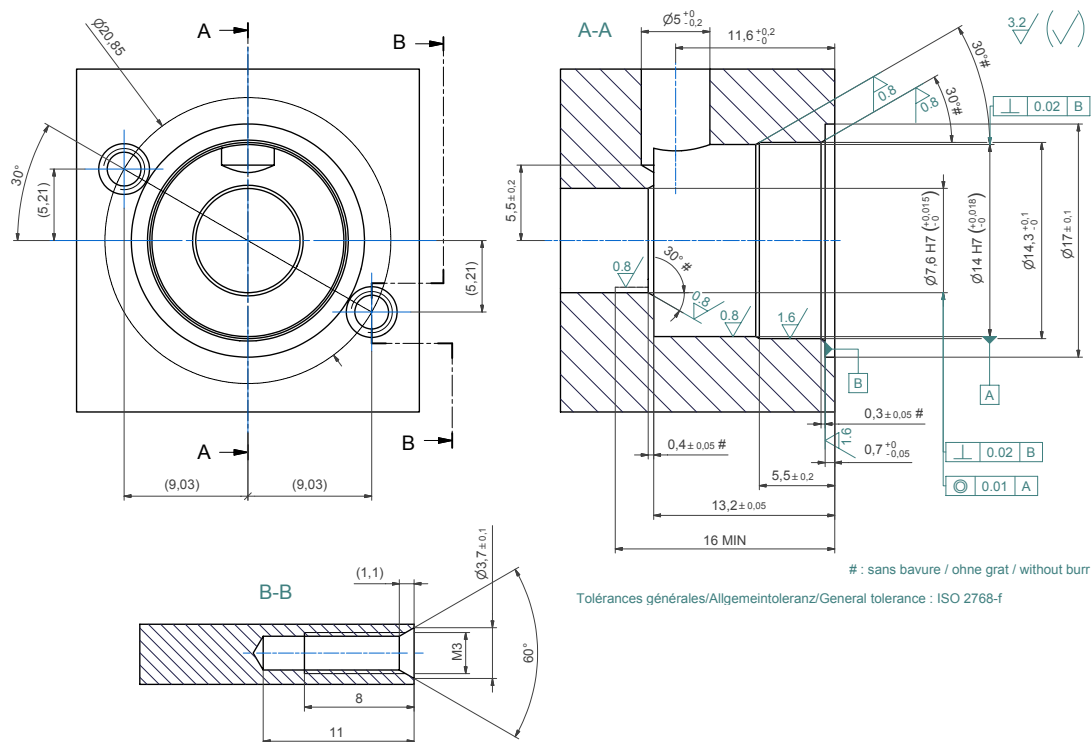
Drawing 1



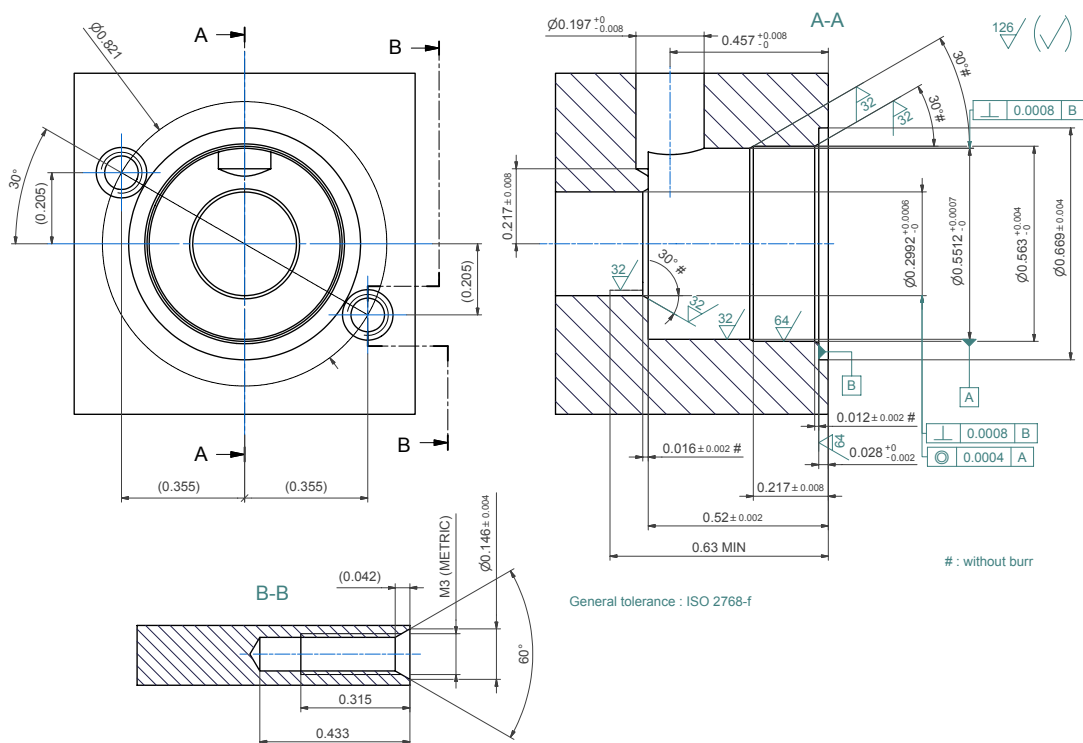
Warning

The technical information given describe the normal features of our products and do not constitute a warranty declaration. The customer is responsible for checking whether its intended purpose is served by the goods ordered. The end of the usual life span of wear and tear parts does not represent a defect.

Cavity dimensions (mm)



Cavity dimensions (inch)

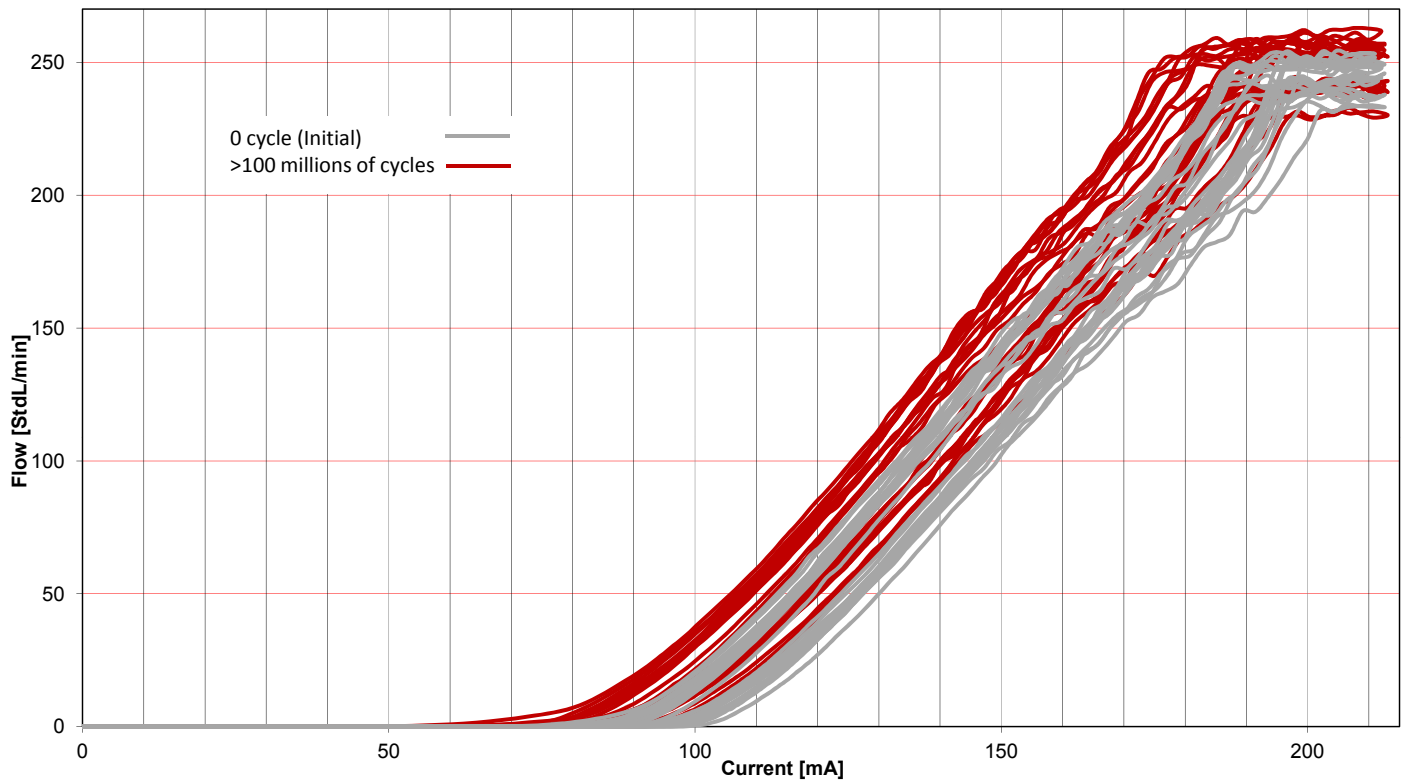


Warning

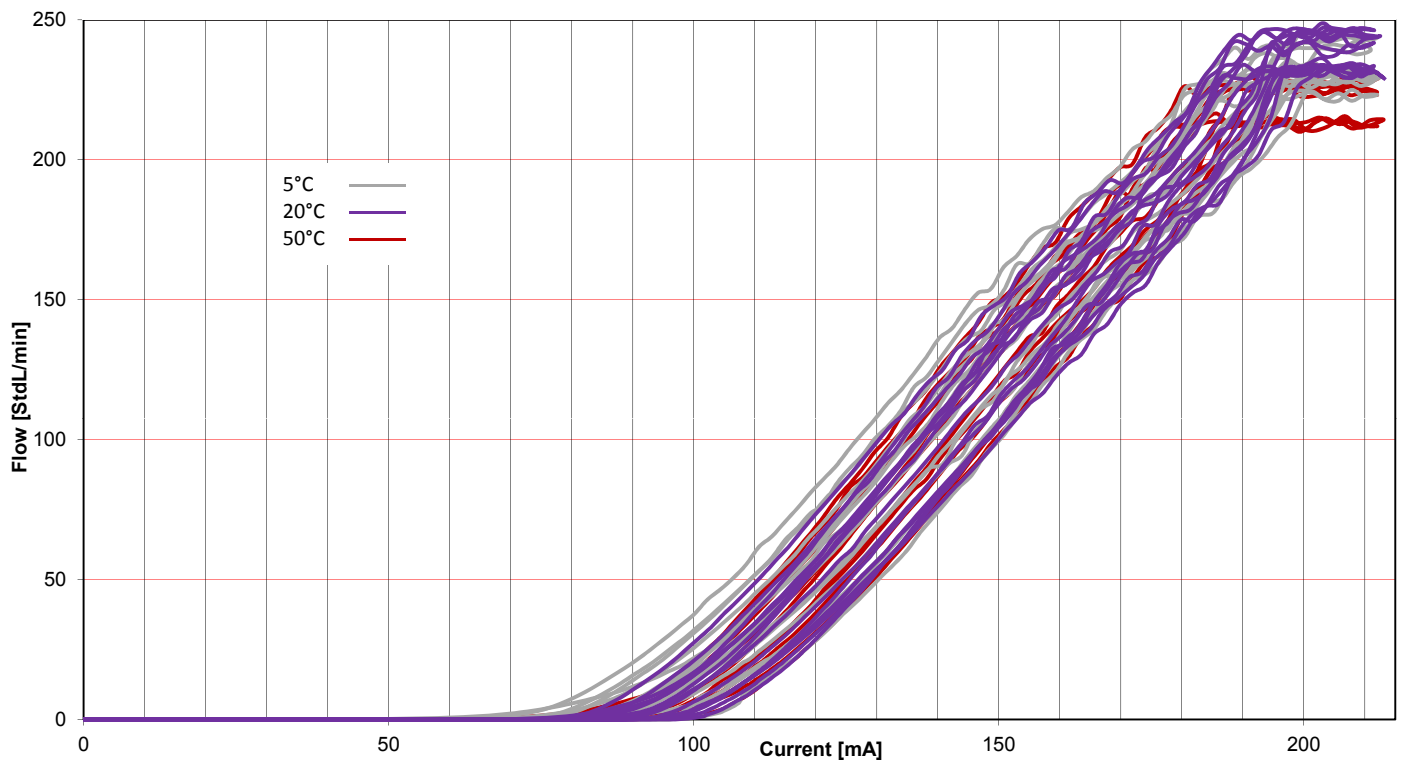
The technical information given describe the normal features of our products and do not constitute a warranty declaration. The customer is responsible for checking whether its intended purpose is served by the goods ordered. The end of the usual life span of wear and tear parts does not represent a defect.

Additional information

Life cycle tests results at 2.4bar (34.8PSI)



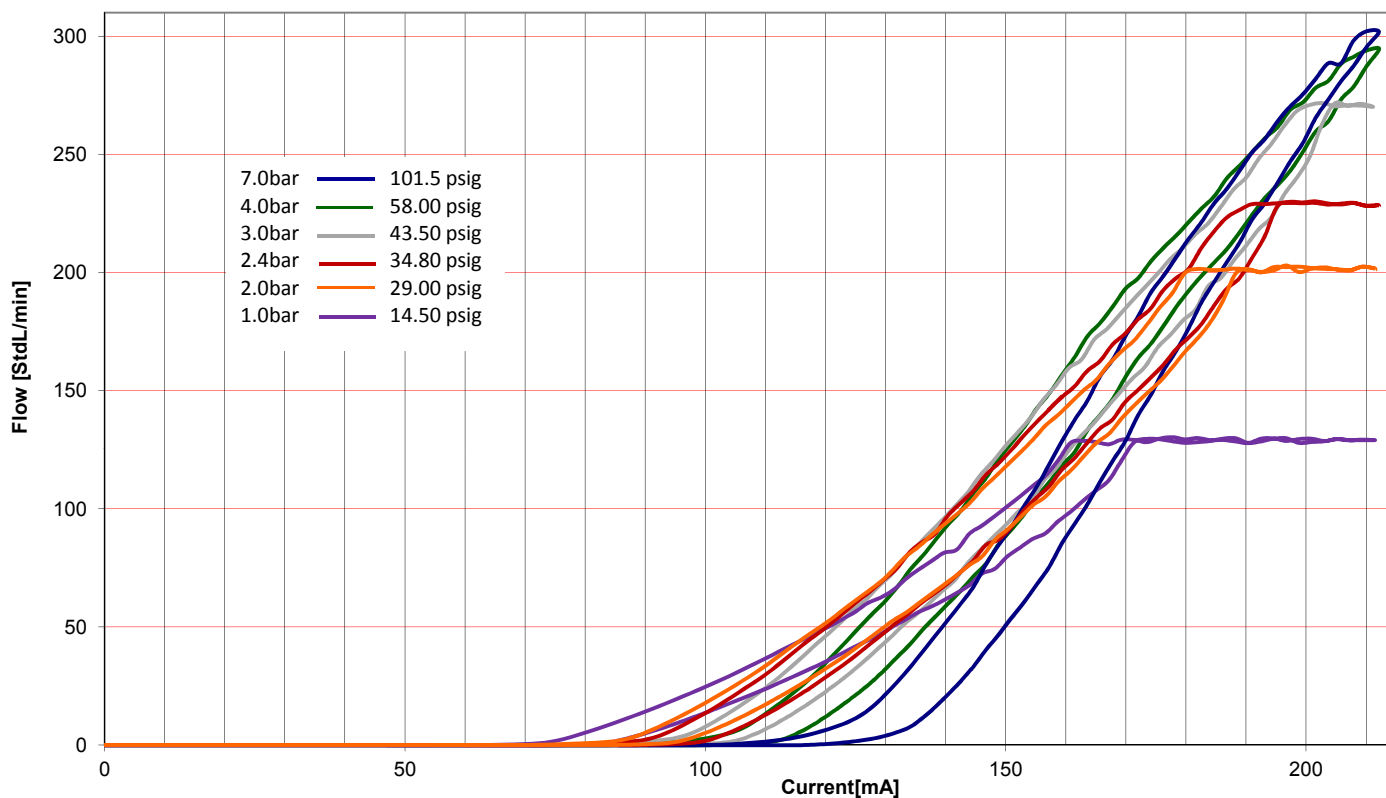
Typical hysteresis over the temperature range at 2.4bar (34.8PSI)



Warning

The technical information given describe the normal features of our products and do not constitute a warranty declaration. The customer is responsible for checking whether its intended purpose is served by the goods ordered. The end of the usual life span of wear and tear parts does not represent a defect.

Typical hysteresis at 20°C with air at different pressure



Warning

The technical information given describe the normal features of our products and do not constitute a warranty declaration. The customer is responsible for checking whether its intended purpose is served by the goods ordered. The end of the usual life span of wear and tear parts does not represent a defect.